

THESE DRAWINGS AND SPECIFICATIONS ARE THE PROPERTY OF JBL INCORPORATED. THEY ARE ISSUED IN STRICT CONFIDENCE AND SHALL NOT BE REPRODUCED OR USED AS THE BASIS FOR MANUFACTURE OR APPARATUS WITHOUT WRITTEN PERMISSION.

ALL MATERIAL SPECIFIED ON THIS DRAWING SHALL COMPLY WITH EUROPEAN DIRECTIVE 2002/95/EC. [0013]

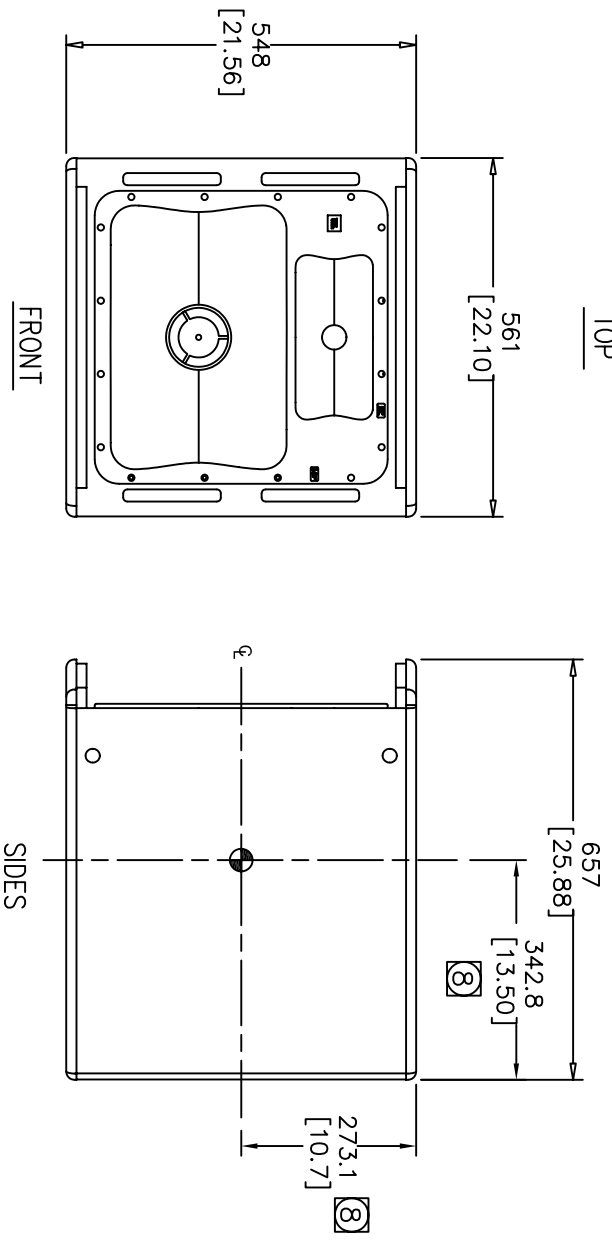
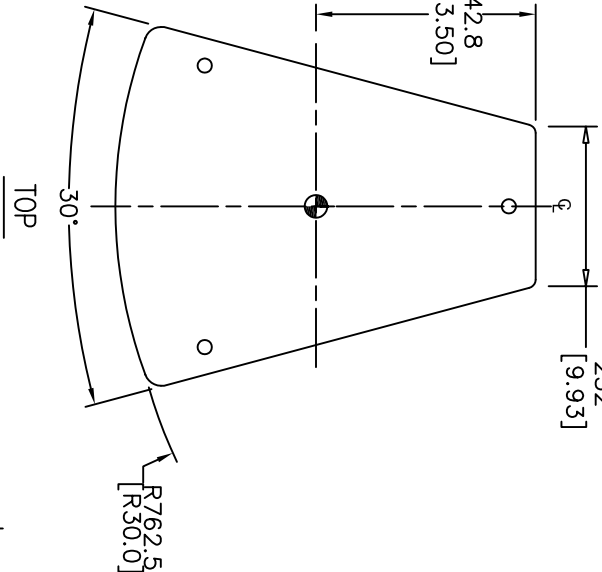
REVISIONS				
CHG.	LTR	DESCRIPTION	DEPT	D.C.
39804	A	RELEASE TO MARKETING	TH	

4

3

2

1



C

C

B

B

A

A

- 8 INDICATED DIMENSIONS ARE TO CENTER OF GRAVITY (CG)
7. WEIGHT: 27.2 Kg(60 LBS).
6. SUSPENSION POINTS: M10 THREADED SUSPENSION POINTS. 3X TOP, 3X BOTTOM, 2X LEFT, 2X RIGHT, 3X REAR
5. COMPONENTS: MF – 2169H
HF – 2432H
4. INPUT CONNECTORS: NEUTRIK NL4 IN PARALLEL WITH 4 POSITION TERMINAL STRIP.
3. GRILL: 14 GA. PERFORATED CRS, POWDER COATED BLACK WITH BLACK FOAM BACKING.
2. MATERIALS: 15.8 MM BIRCH PLYWOOD.
1. FINISH: BLACK DURAFLEX
(WHITE AVAILABLE BY CUSTOM ORDER)

NOTES: (UNLESS OTHERWISE SPECIFIED)

4

3

2

1

TOLERANCES (UNLESS OTHERWISE SPECIFIED)			
X.XX	± .063	INCH	
X.X	± .125	INCH	
ANGULAR TOLERANCE OF 0±30°			
FRACTIONAL DIMENSIONS ± 1/32			
• DIMENSIONS ARE INCHES			
• ALL DIMENSIONS ARE FINISHED DIMENSIONS			
• DO NOT SCALE DRAWING			
TITLE		JBL PROFESSIONAL A Harman International Company Northridge, California 91329 U.S.A.	
CUSTOMER DRAWING: AM7200/XX		DRAWING NO. 445336	
SIZE	A	REV	A
SCALE	NTS	SHEET	1 OF 1